



GUILDHOUSE SCHOOL
LONDON

COURSE DESCRIPTORS

A LEVELS

A levels are an highly regarded qualification that offer an excellent route to study at high ranking UK and global universities, or to help students achieve their career aspirations. It is a focussed programme of study with a minimum of three subjects studied over two years with final examinations in the second year. The Guildhouse School programme is specifically designed for motivated international students with additional English language support to help you excel in your studies. In addition to developing student's English language and academic skills, students will able to choose three subjects to study which will support Higher Education Progression. Academic counselling is available from the School to support students in choosing the right combination of subjects of study that fits with their strengths, prior achievements, and Higher Education aspirations. The curriculum at Guildhouse School London is split into three areas:

Social Science Faculty	STEM (Science, Technology, Engineering & Mathematics) Faculty	LAH (Languages, Arts & Humanities) Faculty
<ul style="list-style-type: none">• Business• Economics• Sociology• Psychology	<ul style="list-style-type: none">• Mathematics• Further Mathematics• Biology• Physics• Chemistry	<ul style="list-style-type: none">• History• Art• English Literature• French• CAE• IELTS



SUBJECT OVERVIEW

This course is suited to students who wish to learn more about the dynamic nature of the business environment. Practical applications of business concepts will be demonstrated, using events in the real world to reinforce understanding of theories and concepts.

WE AIM TO DEVELOP

- Knowledge and understanding of the purposes and advancement of businesses, adopting a balanced and objective mind-set with strong emphasis on contextual analysis and evaluation.
- An appreciation of the influences of various internal and external factors that affect business decision and strategy in developing the holistic and solution based thinking of the students.
- The skills of communication, numeracy, presentation, analysis, interpretation, application and evaluation of business data, both qualitative and quantitative.

HIGHER EDUCATION PATHWAYS

Students can progress onto Business & Management related courses, with the possibility of specialising in marketing, finance, HR, international business, etc.

COMPLEMENTARY SUBJECTS OF STUDY

Economics, Maths, Sociology, Psychology, Art, History, English Literature.

TEXTBOOKS/ REVISION GUIDES

Title	ISBN	Author
AS and A-Level Business	978-1782943518	CGP Books
AQA A-Level Business Workbook 1	978-1510483262	Samuel Stones
AQA A-Level Business Workbook 2	978-1510483279	Samuel Stones



Click [here](#) or scan QR code for **SUBJECT SPECIFICATIONS**

COURSE CONTENT

Year 1 A-level (3 terms)

UNIT 1 - INTRODUCTION TO BUSINESS

Business objectives, business structure/ownership and the external environment.

UNIT 2 - DECISION MAKING

Managers vs. leaders, opportunity cost, decision trees and stakeholder analysis.

UNIT 3 - MARKETING

Market research, the Marketing Mix, and interpreting marketing data.

UNIT 4 - OPERATIONS

Types of production, stock control, quality control and working with suppliers.

UNIT 5 - FINANCE

Cash vs. profit, break even analysis, cash flow forecast, budgeting and sources of finance.

UNIT 6 - HRM

Interpreting organisational charts and personnel indicators, recruitment, training, staff motivation in theory/ practice and improving employer/employee relations.

Year 2 A-level (3 terms)

UNIT 7 - ANALYSING THE STRATEGIC POSITION OF THE FIRM

mission statement, income statements and balance sheets, ratio analysis, and PESTLE analysis (Political, Economic, Social, Technological, Legal and Environmental).

UNIT 8 - CHOOSING STRATEGIC DIRECTION

Ansoff Matrix, Porter's strategies and Bowman's strategic clock theories.

UNIT 9 - PURSUING STRATEGIC METHODS

Business growth, retrenchment, innovation strategies, entering international markets and use of digital technology.

UNIT 10 - MANAGING STRATEGIC CHANGE

Implementing and managing change, organisation culture, business strategy, network analysis and contingency planning.

ASSESSMENTS

- **End of Year 1** A-level studies, students will sit one internal examination (2 hours), assessing units 1-6.
- **End of Year 2** A-level studies, students will sit three external examinations, assessing units 1-10.

Paper 1

All content assessed. Three compulsory sections:
 -Section A (MCQs).
 -Section B has short answer questions.
 -Sections C and D have two essay questions.

2 hours. 100 marks in total. 33.3% of A-Level.

Paper 2

All content assessed. Three data response compulsory questions.

2 hours. 100 marks in total. 33.3% of A-Level.

Paper 3

All content assessed. One compulsory case study followed by approximately six questions.

2 hours. 100 marks in total. 33.3% of A-Level.

For more information, please view our Guildhouse School website www.guildhouseschool.com



Follow us:





SUBJECT OVERVIEW

Studying economics will help you develop transferable skills that will prepare you for studying at university or moving into the world of work. These include skills in data interpretation and essay writing. The economists 'toolkit' of well-developed theories, concepts and strategies enables students to evaluate and critically consider global economic issues, for example, why do some economies grow and others don't? Will the Eurozone survive? Why didn't economists predict the Global Financial Crisis?

WE AIM TO DEVELOP

The aims and objectives of the Pearson Edexcel Level 3 Advanced GCE in Economics A are to enable students to: develop an interest in, and enthusiasm for, the subject appreciate the contribution of economics to the understanding of the wider economic and social environment develop an understanding of a range of concepts and an ability to use those concepts in a variety of different contexts use an enquiring, critical and thoughtful approach to the study of economics and develop an ability to think as an economist understand that economic behaviour can be studied from a range of perspectives develop analytical and quantitative skills, together with qualities and attitudes that will equip them for the challenges, opportunities and responsibilities of adult and working life

HIGHER EDUCATION PATHWAYS

Students taking Economics at A Level often also take Mathematics – though there is no requirement to do so. If you want to study Economics at university then you will need to take A Level Mathematics. Economics also complements humanity subjects, for example, Politics. This is also a popular pathway for those wishing to study disciplines at HE level that would benefit from a working knowledge of the economy. Students that take A Level Economics go on study Economics, Mathematics, Politics, International Relations, History, Business, Finance, Law, any many other courses at university level.

COMPLEMENTARY SUBJECTS OF STUDY

Maths, Business, Sociology, Psychology, History, English Literature.

For more information, please view our Guildhouse School website www.guildhouseschool.com



Follow us:



Guildhouse School



Click [here](#) or scan QR code for **SUBJECT SPECIFICATIONS**

HOURS OF STUDY

September 3 Terms start- 5 hours per week
January 2 Terms start- 9 hours per week

COURSE CONTENT

THEME 1

Introduction to markets and market failure. This theme focuses on microeconomic concepts. Students will develop an understanding of: nature of economics, how markets work, market failure and government intervention.

THEME 2

The UK Economy-performance and policies. This theme focuses on macroeconomic concepts. Students will develop an understanding of: measures of economic performance, aggregate demand, aggregate supply, national income, economic growth, macroeconomic objectives and policy.

THEME 3

Business behaviour and labour markets. This theme develops the microeconomic concepts introduced in Theme 1 and focuses on business economics. Students will develop an understanding of: business growth, business objectives, revenues, costs and profits, market structures, labour market, government intervention.

THEME 4

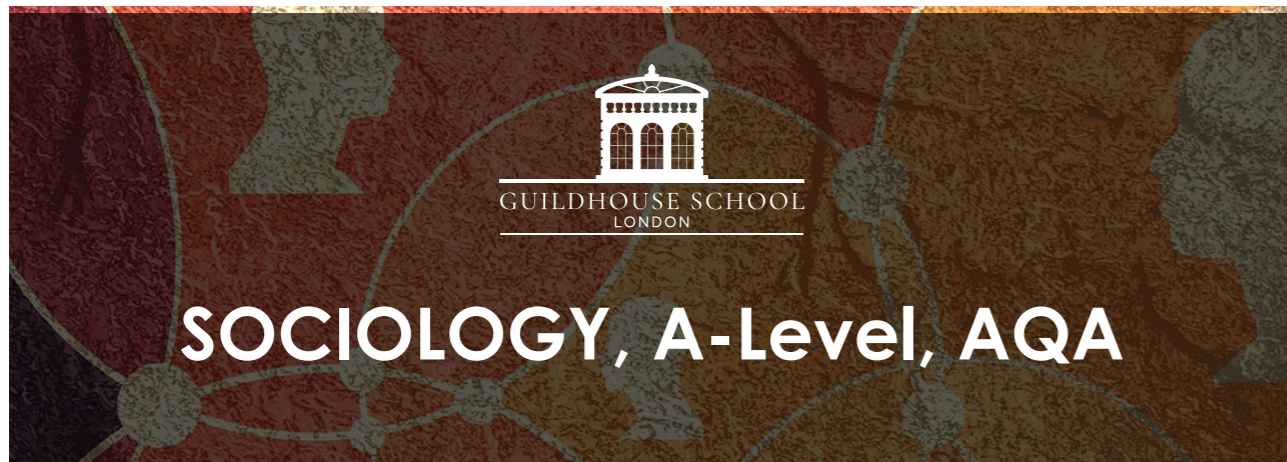
A global perspective. This theme develops the macroeconomic concepts introduced in Theme 2 and applies these concepts in a global context. Students will develop an understanding of: international economics, poverty and inequality, emerging and developing economies, the financial sector, role of the state in the macroeconomy.

ASSESSMENTS

- **End of Year 1** A-level studies, students will sit one internal examination (2hours).
- **End of Year 2** A-level studies, students will sit three external examinations
 - ▶ **Paper 1** – Microeconomics - examines themes 1 and 3
 - ▶ **Paper 2** – Macroeconomics – examines themes 2 and 4
 - ▶ **Paper 3** – Synoptic paper – examines all themes 1-4

TEXTBOOKS/ REVISION GUIDES

Title	ISBN	Author
Edexcel A-level Economics A Student Guide: Theme 1: Introduction to markets and market failure	978-1510458048	Mark Gavin
Edexcel A-level Economics A Student Guide: Theme 2: The UK economy - performance and policies	978-1510458055	Rachel Cole
Edexcel Economics A Student Guide: Theme 3: Business behaviour and the labour market	978-1510458062	Marwan Mikdadi
Edexcel Economics A Student Guide: Theme 4: A global perspective	978-1510458079	Quintin Brewer



SUBJECT OVERVIEW

Sociology is the study of interactions between social institutions and social actors (individuals) in society. It offers a real insight into everyday life and enables us to see our world in a new light. We come to realise that things are not always what they may appear to be.

This fascinating, 'real world' subject focuses on the impact that social institutions such as political, legal, family and education systems have on all of us every day and how we influence them. Differing explanations of society such as Feminism, Marxism and Functionalist theory are examined extensively throughout this course. There is a strong methodological theme running through both years of study.

Sociology is a popular and academically demanding subject which requires a wide range of skills. Students enjoy the variety of activities in lessons and the frequent opportunities to take part in class discussions and engage in debates around contemporary issues. As the course is assessed through examinations, essay writing will be an integral part of your studies. A keen interest in world affairs and issues relating to class, gender, ethnicity, equality is essential.

WE AIM TO DEVELOP

These qualifications offer an engaging and effective introduction to Sociology. Students will learn the fundamentals of the subject and develop skills valued by higher education (HE) and employers, including critical analysis, independent thinking and research.

Retaining the most popular features of our previous, market-leading qualification, we have worked with teachers, HE and the British Sociological Association to produce clear, up-to-date and stimulating specifications. We have built on the success of our previous specification by introducing some minor amendments that reflect advances and changes in the subject and provide a coherent and holistic programme of study.

HIGHER EDUCATION PATHWAYS

Sociology teaches you to think through problems rigorously and systematically. Such skills have traditionally been seen as invaluable in 'people orientated' professions such as teaching, social work, the police force and nursing. However, sociology has a firm basis for law, market research and careers in human resources.

COMPLEMENTARY SUBJECTS OF STUDY

Psychology, History, Business, Economics, English Literature.



Click [here](#) or scan QR code for **SUBJECT SPECIFICATIONS**

HOURS OF STUDY

September 3 Terms start- 5 hours per week

COURSE CONTENT

EDUCATION

With theory and method - role and function of education system, differential educational achievement of social groups, relationships and processes within school, pupil identities and subculture, the hidden curriculum, educational policies and globalisation.

CRIME AND DEVIANCE

With theory and methods - social order, social control, social distribution of crime and deviance, trends and patterns, the media, green crime, human rights, state crimes, prevention and punishment, justice system etc.

FAMILIES AND HOUSEHOLD

Social structure and social change, changing patterns or marriage, cohabitation, separation divorce, childbearing, gender roles, domestic labour and power relationships, demographic trends etc.

BELIEFS IN SOCIETY

Ideology, science, religion, cults, sects, social change, social stability, religious/spiritual movements etc

ASSESSMENTS

- **End of Year 1** A-level studies, students will sit one internal examination (2hours).
- **End of Year 2** A-level studies, students will sit three external examinations

TEXTBOOKS/ REVISION GUIDES

Title	ISBN	Author
AQA A level Sociology Book One including AS Level	9780954007911	Robb Webb
AQA A level Sociology Book Two	9780954007928	Robb Webb
Succeed at A Level Sociology Book One Including AS Level: The Complete Revision Guide	9780954007997	Robb Webb



For more information, please view our Guildhouse School website www.guildhouseschool.com



Follow us:





PSYCHOLOGY, A-Level, AQA

SUBJECT OVERVIEW

Psychology is the study of the behaviour from different perspectives using scientific methods. This science-based subject involves the study of cutting-edge research that can be applied to real-life issues, such as why Eyewitness Testimony is not always accurate in a court room. Psychology is a very popular A-Level subject and academically demanding. It therefore requires a wide range of skills, including critical thinking and mathematical skills. Students enjoy the variety of activities in lessons and the frequent opportunities to take part in practical activities based upon famous psychological research. As the course is assessed through examinations, essay writing will be an integral part of your studies. A keen interest in current affairs and the issues relating to the brain and human behaviour are essential.

WE AIM TO DEVELOP

Essential knowledge and understanding of different areas of the subject and how they relate to each other.
The Demonstration of a deep appreciation of the skills, knowledge and understanding of scientific methods.
Competence and confidence in a variety of mathematical, problem-solving skills and analytical skills.
Enthusiasm for the subject, including developing an interest in further study and careers associated with the subject.

HIGHER EDUCATION PATHWAYS

You will be able to think through problems analytically and critically. Such skills have traditionally been seen as invaluable in 'people orientated' professions such as teaching, social work, the police force and nursing. However, Psychology has a firm basis for law, market research, business management and careers in the health sector.

COMPLEMENTARY SUBJECTS OF STUDY

Sociology, Biology, Business, Economics, History, English Literature.



Click [here](#) or scan QR code for **SUBJECT SPECIFICATIONS**

HOURS OF STUDY

September 3 Terms start- 5 hours per week
January 2 Terms start- 9 hours per week

COURSE CONTENT

Year 1

Social influence
Memory
Attachment
Psychopathology
Approaches in Psychology
Research methods

Year 2

Biopsychology
Issues and debates in Psychology
Cognition and development
Stress
Addiction

ASSESSMENTS

There will be an internal examination at the end of Year 1, then 3 final external examination papers at the end of year 2 of the A-Level.

• Paper 1

Introductory Topics in Psychology - 96 marks - 2 hours
Multiple Choice Questions / Short Answer Questions / Extended Answer Questions

• Paper 2

Psychology in Context - 96 marks - 2 hours
Multiple Choice Questions / Short Answer Questions / Extended Answer Questions

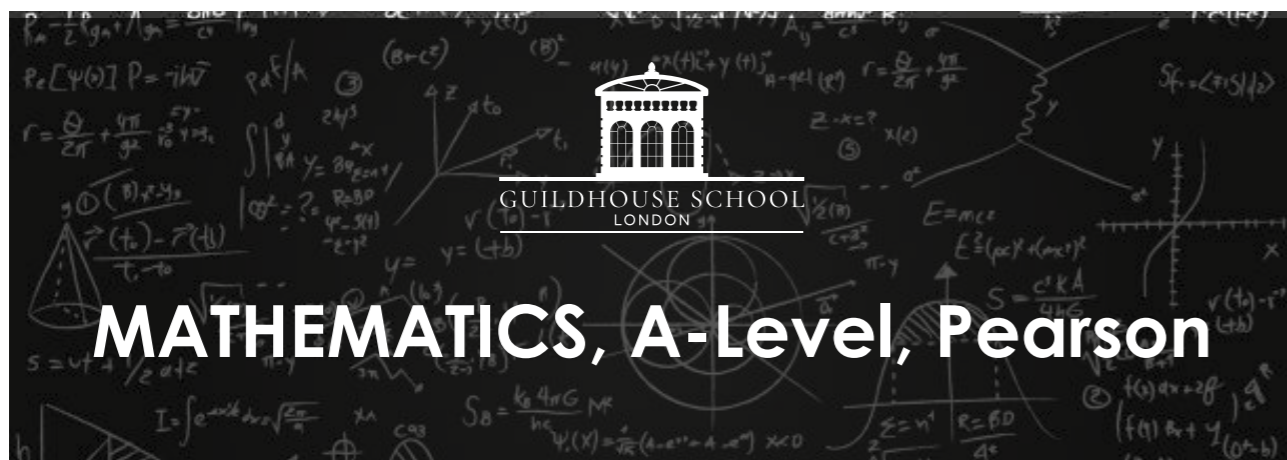
• Paper 3

Issues & options - 96 marks - 2 hours
Multiple Choice Questions / Short Answer Questions / Extended Answer Questions

TEXTBOOKS/ REVISION GUIDES

Title	ISBN	Author
The Complete Companions: AQA Psychology Year 1 and AS Student Book (4th or 5th edition)	978-0198338642	Mike Cardwell, Cara Flanagan
My Revision Notes: AQA A Level Psychology	978-1471882999	Molly Marshall, Susan Firth
Essential Maths Skills for AS/A Level Psychology	978-1471863530	Molly Marshall





MATHEMATICS, A-Level, Pearson

SUBJECT OVERVIEW

This course is suited to students who are interested in studying a broad array of Pure Mathematics topics, alongside with elements in Mechanics and Statistics. Students will also need to be familiar with using the Edexcel and the Word.

During this course students will develop an understanding of Mathematics and mathematical processes commonly used in the scientific, technological, and financial worlds, and to interpret, explain, and evaluate the results of mathematical arguments in a range of different situations and to communicate this information clearly and logically.

WE AIM TO DEVELOP

Reasoning, logic and ability to perform mathematical proof. Use mathematical skills in problem solving. Represent real life situations via mathematical modelling. Read and comprehend mathematical argument. Use technology effectively in particular mathematical graphing tools and spreadsheets.

HIGHER EDUCATION PATHWAYS

Maths is a highly respected A-Level and is useful to study degrees such as aerospace, civil engineering, computer engineering, computer game designing, electronic engineering, finance and banking, management, mechanical engineering, pharmacology, physics, software development, web design, and many more.

COMPLEMENTARY SUBJECTS OF STUDY

Business, Economics, Physics, Chemistry, Further Maths.



Guildhouse School



Click [here](#) or scan QR code for **SUBJECT SPECIFICATIONS**

HOURS OF STUDY

September 3 Terms start- 5 hours per week
January 2 Terms start- 9 hours per week

COURSE CONTENT

PURE MATHEMATICS CONTENT

Proof, Algebraic Expressions, Quadratics, Equations and inequalities, Transformations of Graphs, Coordinate Geometry: lines and circles, Further Algebra: algebraic fractions, The binomial Expansion, Trigonometry, Exponentials and logarithms, Differentiation, Integration, Vectors.

STATISTICS CONTENT

Statistical sampling, Data presentation and interpretation, Probability Statistical distributions, Statistical hypothesis testing.

MECHANICS CONTENT

Quantities and units in Mechanics, Kinematics Forces and Newton's laws.

ASSESSMENTS

Students will take 1 internally assessed papers at the end of year 1 A-level studies. Students will sit 3 external assessed papers at the end of year 2 A-level studies.

- **Paper 1:** Pure Mathematics, 33%, 2 hours, 100 marks
- **Paper 2:** Pure Mathematics, 33%, 2 hours, 100 marks
Any A Level Pure Mathematics content can be assessed on either paper
- **Paper 3:** Statistics and Mechanics, 33%, 2 hours, 100 marks.
- **Any A Level applied content will be assessed:**
 - ▶ **Section A:** Statistics (50 marks)
 - ▶ **Section B:** Mechanics (50 marks)

TEXTBOOKS/ REVISION GUIDES

Title	ISBN	Author
Pearson AS and A Level Mathematics Pure Mathematics Year 1/AS	978-1292183398	Greg Attwood
Pearson A Level Mathematics Pure Mathematics Year 2 Textbook	978-1292183404	Greg Attwood
Pearson AS and A level Mathematics Statistics & Mechanics Year 1/AS Textbook	978-1292232539	Greg Attwood
Pearson A level Mathematics Statistics & Mechanics Year 2 Textbook	978-1446944073	Harry Smith

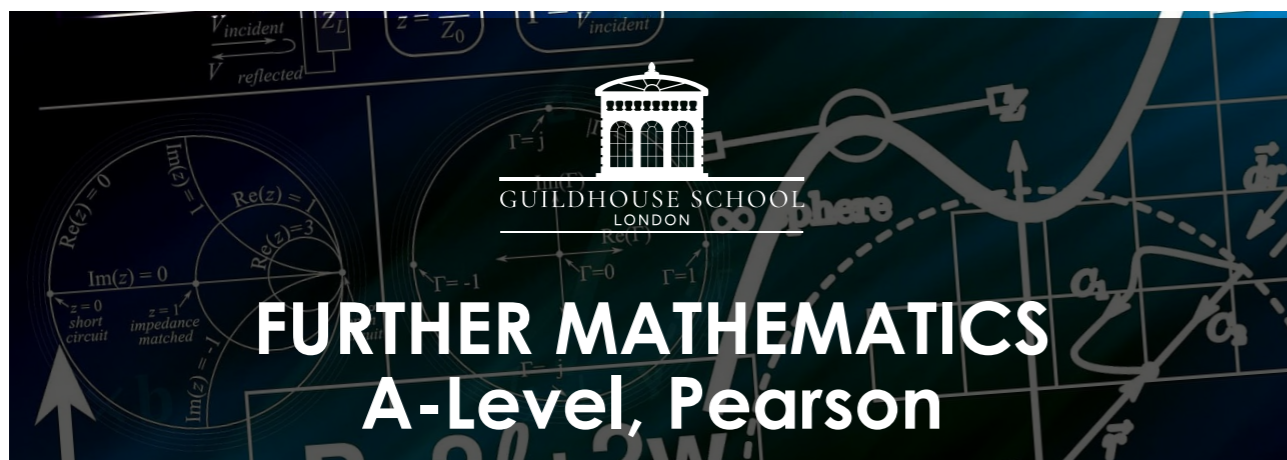
Calculator is an essential part of the course. The recommended calculator, which will be used in lessons, is CASIOCG-50 which can be purchased via the school.

For more information, please view our Guildhouse School website www.guildhouseschool.com



Follow us:





COURSE CONTENT

IN PURE WE COVER:

- Proof
- Complex numbers
- Matrices
- Further algebra and functions
- Further calculus
- Further vectors

The remaining parts of the syllabus in options depend on the choices made by the students in within academic year and may lead to follow either Statistics or Mechanics path.

SUBJECT OVERVIEW

This is a one-year course leading to the study of A2 Further Maths in the second year in order to achieve A Level qualification in Further Maths. Excellent knowledge of GCSE/IGCSE Maths is required to be successful in this course. Students can study this course in parallel to their study of A1 Level Maths.

WE AIM TO DEVELOP

An understanding of Mathematics and mathematical processes further, which are commonly used in the scientific, technological and financial worlds, and to interpret, explain, and evaluate the results of mathematical arguments in a range of different situations and to communicate this information clearly and logically.

HIGHER EDUCATION PATHWAYS

Aerospace, Civil engineering, Computer Engineering, Computer game designing, Electronic engineering, Finance and Banking, Management, Mechanical engineering, Pharmacology, Physics, Software development, Web design and many more.

COMPLEMENTARY SUBJECTS OF STUDY

Maths, Physics, Economics.



ASSESSMENTS

Students will take 2 internally assessed papers at the end of year 1 A-level studies. Students will sit 2 external assessed papers at the end of year 2 A-level studies.

- **Paper 1:** Core Pure Mathematics
- **Paper 2:** Further Mathematics Options
Each paper lasts 1 hour and 40 minutes and is worth 50% of the qualification.

TEXTBOOKS/ REVISION GUIDES

Title	ISBN	Author
AS and A Level Further Mathematics: Core Pure Mathematics Book 1/AS	9781292183336	Pearsons
AS and A Level Further Mathematics: Core Pure Mathematics Book 2	9781292183343	Pearsons

There will be another textbook depending on the optional exam: Further Statistics 1 (FS1) or Further Mechanics 1 (FM1) . Calculator Casio fx-CG50 is required.





SUBJECT OVERVIEW

The purpose of this course is to develop essential knowledge and understanding of biological facts, concepts and principles and to appreciate their significance in new and changing situations. It is important to understand the social and environmental implications and the economic and technological applications of modern biology. The course promotes an appreciation of the importance of experimental and investigatory work. Students develop an understanding of the connection between facts, concepts and the everyday context of different areas of biology.

WE AIM TO DEVELOP

Biology A – Provides a flexible approach. The specification is divided into topics, each covering different key concepts of biology. Teaching of practical skills is integrated with the theoretical topics and they are assessed through the written papers. For A level only, the Practical Endorsement will also support the development of practical skills. (OCR Biology A Specification).

HIGHER EDUCATION PATHWAYS

Biology opens up a large range of career options as, together with other sciences, it is important for technology, research, conservation, resource management, social work and the medical profession as well as many other occupations.

COMPLEMENTARY SUBJECTS OF STUDY

Chemistry, Psychology, Maths, Physics.



Guildhouse School



Click [here](#) or scan QR code for **SUBJECT SPECIFICATIONS**

HOURS OF STUDY

September 3 Terms start- 5 hours per week
January 2 Terms start- 9 hours per week

COURSE CONTENT

Year 1

MODULE 1 – Development of practical skills in biology
MODULE 2 – Foundations in biology
MODULE 3 – Exchange and transport
MODULE 4 – Biodiversity, evolution and disease

Year 2

MODULE 5 – Communication, homeostasis and energy
MODULE 6 – Genetics, evolution and ecosystems

ASSESSMENTS

There will be an internal test at the end of Year 1, then a final 3 external papers at the end of the A-Level year 2. Practical tasks for the Practical endorsement have to be completed during the scheduled timetabled lessons by the end of the A Level.

• Paper 1

100 marks - 2 hour 15 minutes. Consisting of: Modules 1, 2, 3, 5
15 Multiple Choice Questions. Short Answer Questions. Extended Answer Questions

• Paper 2

100 marks. 2 hour 15 minutes consisting. Consisting of: Modules 1, 2, 4, 6
15 Multiple Choice Questions. Short Answer Questions. Extended Answer Questions

• Paper 3

70 marks. 1 hour 30 minutes. Consisting of: Modules (1-6) Unified
Short Answer Questions. Extended Answer Questions

TEXTBOOKS/ REVISION GUIDES

Title	ISBN	Author
Biology OCR 1 (Hodder)	978-1471809156	Jenny Wakefield-Warren, Richard Fosbery, Adrian Schmit
Biozone OCR Biology 1	978-1927309131	Greenwood, Tracey
OCR A Year 1 & 2 Complete Revision & Practice with Online Edition	978-1782942993	CGP Books
OCR A-level Biology Student Guide: Practical Biology (OCR)	978-1471885617	Richard Fosbery

For more information, please view our Guildhouse School website www.guildhouseschool.com



Follow us:





SUBJECT OVERVIEW

Physics is generally recognised as the most fundamental of the sciences. It is also the most mathematical. For this reason it is highly regarded by most university admissions officers even when its relevance may not be immediately obvious. While it is a desirable subject at A Level for anyone intending to study Medicine and Engineering at University, many business and law courses will also accept A Level Physics as an entry qualification. An important part of the course is to enhance the students' understanding of the link between theory and experiment and foster the development of skills in the design and execution of experiments.

WE AIM TO DEVELOP

Physics A – a content-led approach. A flexible approach where the specification is divided into topics, each covering different key concepts of physics. As learners progress through the course they will build on their knowledge of the laws of Physics, applying their understanding to solve problems on topics ranging from sub-atomic particles to the entire universe. For A level only, the Practical Endorsement will also support the development of practical skills. (OCR Physics A Specification).

HIGHER EDUCATION PATHWAYS

After the A-Level course, one can study Physics at University, but many courses demand a physical science qualification for such diverse careers such as architecture, engineering, medicine, computing, meteorology etc.

COMPLEMENTARY SUBJECTS OF STUDY

Chemistry, Maths, Further Maths.



Click [here](#) or scan QR code for **SUBJECT SPECIFICATIONS**

HOURS OF STUDY

September 3 Terms start- 5 hours per week
January 2 Terms start- 9 hours per week

COURSE CONTENT

Year 1

- MODULE 1** – Development of practical skills in physics
- MODULE 2** – Foundations of physics
- MODULE 3** – Forces and motion
- MODULE 4** – Electrons, waves and photons

Year 2

- MODULE 5** – Newtonian world and astrophysics
- MODULE 6** – Particles and medical physics

ASSESSMENTS

There will be an internal test at the end of Year 1, then a final 3 external papers at the end of the A-Level year 2. Practical tasks for the Practical endorsement have to be completed during the scheduled timetabled lessons by the end of the A Level.

• Paper 1

100 marks - 2 hour 15 minutes

Modules 1, 2, 3, 5 / 15 Multiple Choice Questions / Short Answer Questions / Extended Answer Questions

• Paper 2

100 marks - 2 hour 15 minutes consisting

Modules 1, 2, 4, 6 / 15 Multiple Choice Questions / Short Answer Questions / Extended Answer Questions

• Paper 3

70 marks - 1 hour 30 minutes

Modules (1-6) Unified / Short Answer Questions / Extended Answer Questions

TEXTBOOKS/ REVISION GUIDES

Title	ISBN	Author
A Level Physics A for OCR Year 1 and AS Student Book (OUP)	978-0198352174	Graham Bone, Gurinder Chadha, Nigel Saunders
OCR A Level Physics A Revision Guide (OUP)	978-0198352204	Gurinder Chadha
OCR A-level Physics Student Guide: Practical Physics	978-1471885174	Kevin Lawrence, Carol Davenport, Graham George

For more information, please view our Guildhouse School website www.guildhouseschool.com



Follow us:





SUBJECT OVERVIEW

The primary objective of this course is to understand fundamental chemical concepts and to apply them in unfamiliar circumstances. Main concepts of inorganic, organic and physical chemistry are introduced through a series of taught lessons structured as a dialogue between the teacher and students with emphasis on application of knowledge to various written and practical tasks. A series of 12 practical activity groups (PAGs) incorporated into the course. These focus on following, evaluating and planning specific laboratory procedures, risk assessment and confident use of equipment as well as developing skills for working independently and in groups. The course duration is two years. Chemistry is relevant to many subjects such as medicine, pharmacy, veterinary science, dentistry, geology and engineering and is much sought after by British Universities. Students taking a science course or science subjects should seriously consider Chemistry.

WE AIM TO DEVELOP

OCR Chemistry A – a content-led approach. A flexible approach where the specification is divided into topics, each covering different key concepts of chemistry. Teaching of practical skills is integrated with the theoretical topics, and they're assessed both through written papers and the Practical Endorsement. (OCR Chemistry A Specification).

HIGHER EDUCATION PATHWAYS

After the A-Level course, Chemistry opens up an extensive range of career options such as research, industry, commerce, manufacturing, teaching, pharmacology and the medical profession as well as many other occupations.

COMPLEMENTARY SUBJECTS OF STUDY

Biology, Physics, Maths, Further Maths.



Click [here](#) or scan QR code for **SUBJECT SPECIFICATIONS**

HOURS OF STUDY

September 3 Terms start- 5 hours per week
January 2 Terms start- 9 hours per week

COURSE CONTENT

Year 1

MODULE 1 – Development of practical skills in chemistry
MODULE 2 – Foundations of chemistry
MODULE 3 – Periodic table and energy
MODULE 4 – Core organic chemistry

Year 2

MODULE 5 – Physical chemistry and transition elements
MODULE 6 – Organic chemistry and analyses

ASSESSMENTS

There will be an internal test at the end of Year 1, then a final 3 external papers at the end of the A-Level year 2. Practical tasks for the Practical endorsement have to be completed during the scheduled timetabled lessons by the end of the A Level.

• Paper 1

100 marks - 2 hour 15 minutes

Modules 1, 2, 3, 5 / 15 Multiple Choice Questions / Short Answer Questions / Extended Answer Questions

• Paper 2

100 marks - 2 hour 15 minutes consisting

Modules 1, 2, 4, 6 / 15 Multiple Choice Questions / Short Answer Questions / Extended Answer Questions

• Paper 3

70 marks - 1 hour 30 minutes

Modules (1-6) Unified / Short Answer Questions / Extended Answer Questions

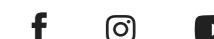
TEXTBOOKS/ REVISION GUIDES

Title	ISBN	Author
A level Chemistry for OCR (available online as a part of the course)	978-0198351979	Rob Ritchie & Dave Gent
Calculations in AS/A level Chemistry (essential)	978-0582411272	Jim Clark
Advanced Chemistry (recommended for deeper understanding of key concepts)	978-0198392910	Michael Clugston & Rosalind Flemming
My Revision Notes: OCR A Level Chemistry A	978-1471842283	Mike Smith
OCR A-level Chemistry Student Guide: Practical Chemistry	978-1471885648	Nora Henry
Essential Maths Skills for AS/A Level Chemistry	978-1471863493	Nora Henry

For more information, please view our Guildhouse School website www.guildhouseschool.com



Follow us:





SUBJECT OVERVIEW

First and foremost, you should choose History if you are interested in people's lives and the forces that influence them. Historians are, by definition, nosy! We like to peek into the past and find out what motivated people to behave the way they did. This subject will challenge you to make valid interpretations of past events and yet remain objective. We will focus on using sources critically, developing valuable skills of analysis and evaluation. Throughout the course we will look for opportunities to complement our classroom studies through visits and trips. Our A Level History A specification provides a fantastic curriculum for students to ignite and engage their passions and interests.

WE AIM TO DEVELOP

Our aim is to create independent learners, critical thinkers and decision-makers – all personal assets that can make them stand out as they progress to higher education.

HIGHER EDUCATION PATHWAYS

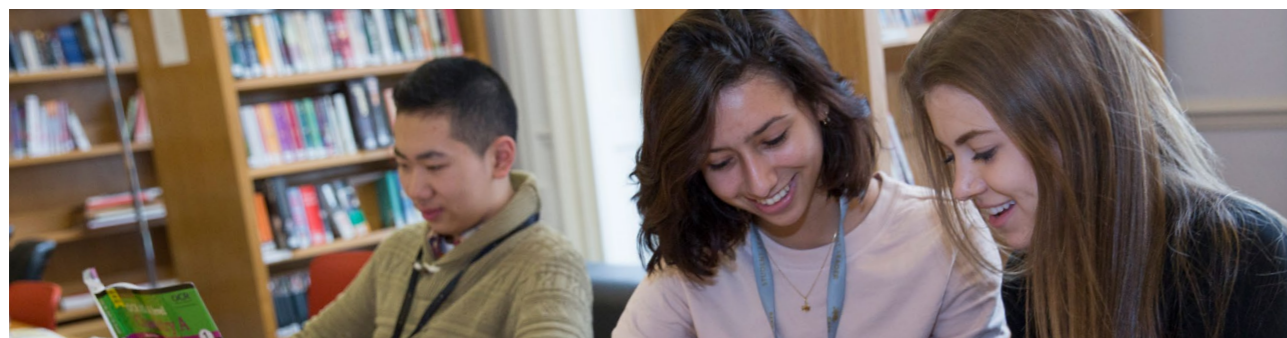


The main purpose of this qualification is to prepare learners by providing a suitable foundation for the study of history or related courses in Higher Education. A further purpose of this qualification is to prepare learners intending to pursue careers or further study in history, law, literature, journalism, or as part of a general education.

COMPLEMENTARY SUBJECTS OF STUDY



English Literature, Art, Sociology, Psychology, Business, Economics.



Click [here](#) or scan QR code for **SUBJECT SPECIFICATIONS**

HOURS OF STUDY

5 hours per week

COURSE CONTENT



Study the history of more than one country or state in addition to the study of British history; Undertake a thematic study, covering an extended period of history of approximately 100 years; Explore a topic in history they have an interest in through the coursework element.

ASSESSMENTS



British period study and enquiry: (unit group 1)

1G Challenge and Transformation: Britain 1851-1964- Breadth study - 40%

British period: Breadth study. 80 marks. 2 hour 30 minute paper

Non-British period study: (unit group 2)

2Q The American Dream: Reality and Illusion- Depth study 40%

Non-British Depth study.

80 marks. 2h 30minute paper

Research based essay: (Component 3) 20%

3500–4500-word essay

TEXTBOOKS/ REVISION GUIDES



Title	ISBN	Author
<u>Oxford AQA History for A Level: Challenge and Transformation: Britain c1851-1964</u> (Oxford A Level History for AQA)	9780198354666	Fortune, Ailsa, Waller, Sally
<u>Oxford AQA History for A Level: The American Dream: Reality and Illusion 1945-1980</u> Oxford A Level History for AQA	978-0198354550	Waller, Sally, Stacey, Mark
<u>My Revision Notes: AQA AS/A-level History: The American Dream: Reality and Illusion, 1945-1980</u> [Optional]	978-1510418165	Sanders, Vivienne

For more information, please view our Guildhouse School website www.guildhouseschool.com



Follow us:





SUBJECT OVERVIEW

This course is suited to students who wish to explore their creative capabilities and who wish to study art at university level. Students will be able to experiment with a range of creative techniques embracing both traditional and contemporary processes. Practical learning is scaffolded with contextual studies designed to develop individual student interests. Students will create a portfolio of work which will support their exam grade and can also be used for university applications within their chosen specialism.

WE AIM TO DEVELOP

- An ability to interpret the work of Artists, Craftspeople, Cultures and Movements that influence the visual world around us.
- Skills in using a variety of media including painting, drawing, mixed media, sculpture, installation, textiles, ceramics, print making, digital media and photography.
- The confidence to research artistic techniques in an independent, purposeful, and effective way.
- A portfolio of work that can be used for interview at university.
- The ability to work creatively to create unique, ambitious, and impressive pieces of art with fully realised artistic intentions. This develops critical thinking skills and decision making, along with a mastery of skills.

HIGHER EDUCATION PATHWAYS

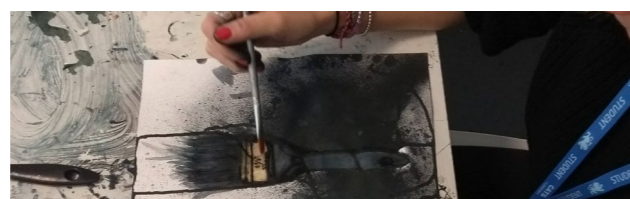


Students can progress onto courses in Architecture, Design, Visual Communication such as Graphics or Illustration, Media, Marketing, Journalism, as well as the Retail and Fashion Industry.

COMPLEMENTARY SUBJECTS OF STUDY



Math, Physics, Business, Economics, Sociology, History, Psychology



For more information, please view our Guildhouse School website www.guildhouseschool.com



Follow us:



Guildhouse School



Click [here](#) or scan QR code for SUBJECT SPECIFICATIONS

HOURS OF STUDY



5 hours per week

COURSE CONTENT



Year 1

The focus of Year 1 is to build up the student's skill set in a range of materials and techniques and understanding in how to develop and deliver a concept. As the year progresses, students work towards the goal of selecting a theme for Year 2 that best displays their talents. This is achieved through:

- Gallery visits
- Developing drawing skills
- Painting workshops
- Experimental drawing techniques
- Working with 3D materials
- Mini projects
- Contextual studies

60% of the overall A Level grade. In the coursework, students must demonstrate:

- The ability to research the artist/culture/art movement of their choosing
- Technical skills in using a range of artistic techniques that shows developing expertise
- Observational work relevant to their chosen theme
- A range of pieces of art that showcase the student's knowledge and skills. These artworks can take the form of paintings, prints, multi-media pieces, sculpture, photographs and video works
- Analytical writing skills in the form of an essay which supports and explains their artwork via a self-set inquiry.

Year 2

The focus of Year 2 is to successfully complete 2 components that make up a student's final A-level grade.

Component 1 / Personal Investigation:

Students will be asked to create a body of coursework based on the theme of their choosing. The Personal Investigation forms

Component 2 / Externally Set Assignment:

Students will be asked to create a project based on a theme set by the exam board (AQA). The Externally Set Assignment forms 40% of the overall A Level grade. In this project, students will have to demonstrate all the same skills as required for Component 1/ Personal Investigation.

ASSESSMENTS



• Year 1:

Through the quality of practical outcomes and projects devised using the exam assessment criteria.

• Year 2:

► **Component 1 / The personal investigation:** 60% of A-level grade.

► **Artwork assessed:** Coursework, practical outcomes, sketchbooks and 1000-3000 personal investigation essay

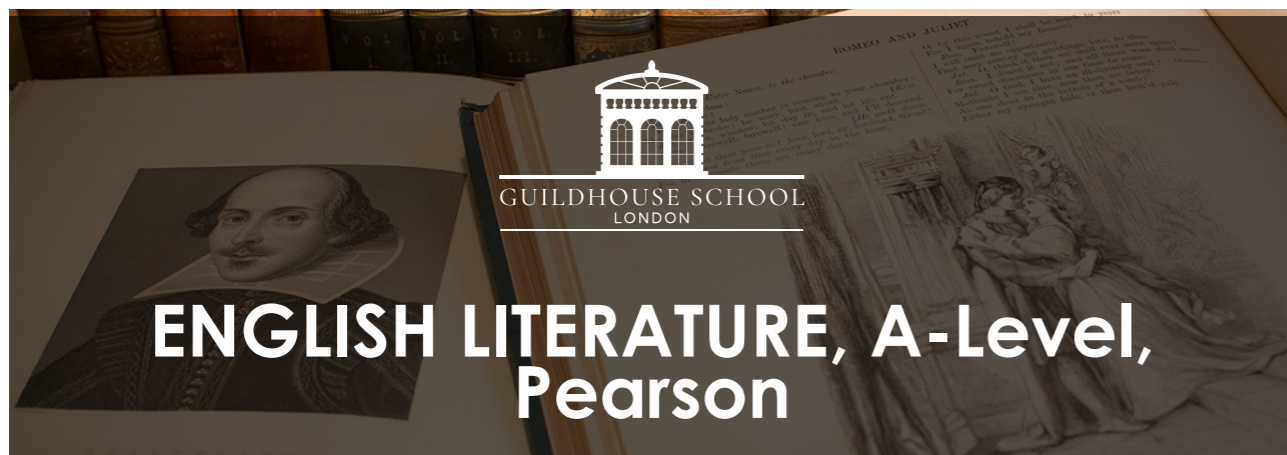
► **Component 2 / Externally Set Assignment:** 40% of A-level grade.

► **Artwork assessed:** Coursework, sketchbooks, practical outcomes

TEXTBOOKS/ REVISION GUIDES



Students will be advised as to the best materials, websites and museums/art galleries suited to their needs. It is recommended that students go to as many exhibitions as possible in their spare time, to enrich their understanding and awareness of current and historical art movements. Students will also be offered gallery visits as extra-curricular activities and also as part of class time.



SUBJECT OVERVIEW

A Level English Literature equips students with the skills needed to read, interpret and analyze texts, whilst also training students to make connections between texts. Reading, discussing and writing are key. Students are not only expected to read, but also to engage critically about what they have read and to analyze techniques the writers use to communicate their ideas through their craft. During the course students will have the opportunity to study drama, prose and poetry with set texts prescribed by the exam board. Additionally, students are required to compose an independent coursework piece which showcases the analytical skills they have acquired throughout the course.

WE AIM TO DEVELOP

A Level English Literature aims to equip our students with a wide range of transferable skills. These include, but are not limited to:

- Problem solving skills: metacognition, creativity and collaboration
- Systems thinking: decision making and reasoning
- Critical thinking: analyzing, synthesizing and reasoning skills
- Communication: verbal and written
- Interpersonal skills: collaboration and cultural awareness

PROGRESSION PATHWAYS



English Literature is a highly respected A level subject, one of the Russell group 'facilitating' subjects and also one highly considered by Oxbridge. As well as an English Literature degree itself, students of Literature might go on to study for University degrees in a range of subjects including: History, Sociology, Psychology, Drama and Theatre Studies, Law and PPE. It is also very effective in developing transferrable skills such as interpretive abilities, communication, an understanding of how language works, close analysis, and the ability to construct a well-argued case. These are highly valued in a range of graduate careers such as Teaching, Business and Finance, Journalism, Publishing and Politics.

COMPLEMENTARY SUBJECTS OF STUDY



History, Sociology, Psychology, Business, Economics.



Click [here](#) or scan QR code for **SUBJECT SPECIFICATIONS**

HOURS OF STUDY

5 hours per week

COURSE CONTENT



DRAMA

Students study one Shakespeare play and one other comedy/tragedy play from a prescribed list.

PROSE

Students study two texts (at least one must be pre-1900) from a choice of 6 themes: childhood, colonization and its aftermath, crime and detection, science and society,

the supernatural and women and society.

POETRY

Students study one set collection: Poems of the Decade An Anthology of the Forward Books of Poetry and one other collection of poems from a prescribed list: Medieval poets, Metaphysical poets, The Romantics, The Victorians, Modernist poets or Movement poets.

ASSESSMENTS



Component 1 – Drama – Exam assessment – 2 hours 15 minutes – 30%

Component 2 – Prose – Exam assessment – 1 hour 15 minutes – 20%

Component 3 – Poetry – Exam assessment – 2 hours 15 minutes - 30%

Component 4 – Coursework assignment 2500-3000 words – 20%

TEXTBOOKS/ REVISION GUIDES



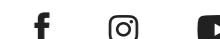
Students on the English Literature course study six set texts as prescribed by the specification. In addition, they study two texts for their independent coursework assignments.



For more information, please view our Guildhouse School website www.guildhouseschool.com



Follow us:





SUBJECT OVERVIEW

The A-level course in French is a linear course meaning that students will sit all their exams at the end of the course. This course is for students with prior intermediate knowledge of the language (possibly at iGCSE). This course is very much focused not only to improve the students' language skills, but also to explore the culture, history and society of the country where the language is spoken. Throughout their studies, students learn the language in the context of the countries and issues and influences which have shaped them. In their second year of study, students will have the opportunity to carry out independent research on a specific topic they are interested in. They will also study two works of literature OR a work of literature and a film in the target language (teacher's discretion).

WE AIM TO DEVELOP

- Develop students' speaking and listening skills
- Understand and respond to texts using different strategies
- Increase their confidence in writing and translation skills
- Gain knowledge and understanding of the language and culture
- Improve their grammar and conjugation knowledge in French
- Learn research skills carrying out an individual research project
- Develop cultural knowledge through literature and a film

PROGRESSION PATHWAYS



An A-level in Modern Foreign Languages will earn UCAS points at most universities and increase the student's chances of an offer. A language degree is an asset for careers such as: business, civil service, economics, education, hospitality and tourism, IT and telecommunications, law, marketing and publishing, media and journalism, recruitment, and human resources, retail sales and customer service, transport, and logistics.

Other prospects include a career with the diplomatic and foreign services. It is also essential to have a language degree if students are interested in working within the European Commission. The more common avenues of language interpretation and translation are also open to those that study Modern Foreign Languages. Lastly, the knowledge of a foreign language will always be desirable in any career that students may wish to pursue.

COMPLEMENTARY SUBJECTS OF STUDY



Business, Economics, History, Art, Sociology, English Literature.



Click [here](#) or scan QR code for **SUBJECT SPECIFICATIONS**

HOURS OF STUDY

5 hours per week

COURSE CONTENT



The content is based on exploring and deepening the following areas: aspects of French-speaking society: current trends (family, cyber-society, volunteering) and artistic culture in the French-speaking world (cultural heritage, francophone music and cinema).

Year 1

ASPECTS OF FRENCH-SPEAKING SOCIETY:

- Current trends
- Family
- Cyber-society
- Role of volunteering

ARTISTIC CULTURE IN THE FRENCH-SPEAKING WORLD

- A culture proud of its heritage
- Contemporary francophone music
- Cinema

Year 2

ASPECTS OF FRENCH-SPEAKING SOCIETY: CURRENT TRENDS

- Positive aspects of a diverse society
- Life of marginalised people
- How criminals are treated

ARTISTIC CULTURE IN THE FRENCH-SPEAKING WORLD

- The right to vote and political engagement of teenagers
- Strikes and protests
- Politics and immigration

ASSESSMENTS



The examinations are internally taken at the end of each term (for progress purposes) for the topics studied with the external final examination in May/June of the second year.

The A-level French course consists of 3 papers assessing the 4 skills:

- Paper 1: Listening, Reading and Writing
- Paper 2: Writing (set text/film)
- Paper 3: Speaking

TEXTBOOKS/ REVISION GUIDES



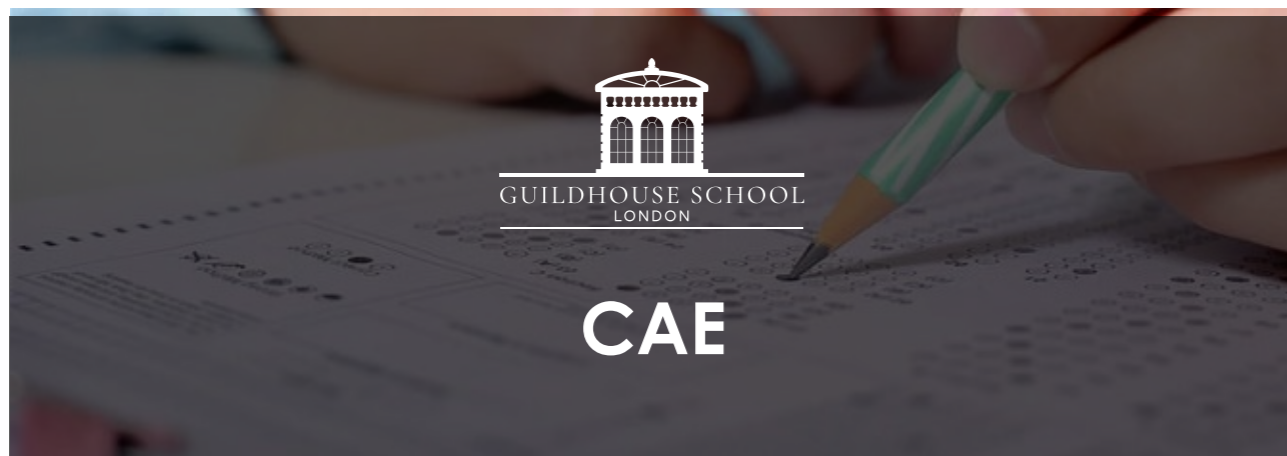
Title	ISBN	Author
AQA French A Level Year 1 and AS (AQA A Level French 2nd edition)	978-0198366881	Robert Pike
AQA French A Level Year 2	978-0198366850	Robert Pike

For more information, please view our Guildhouse School website www.guildhouseschool.com



Follow us:





HOURS OF STUDY

September 3 Terms start- 5 hours per week
January 2 Terms start- 9 hours per week

SUBJECT OVERVIEW

All students within the school who have not yet achieved an IELTS or equivalent of 7.5 overall and no less than 7.0 in each skill need to take EAP classes at Guildhouse School. The students are streamed in terms of language ability but are mixed in their classes in terms of Programme of Study.

Students study a syllabus based on a specific language exam which is dependent upon their level of English upon entry to the school. Students predominantly study towards one of the Cambridge Suite of exams: FCE / CAE, the former acts as a gateway study path towards CAE, most common for our AS students and the latter is accepted by all UK universities as an acceptable proof of language ability. Further benefits of this exam include the lifelong nature of the qualification, as opposed to IELTS with its 2 year expiration date and the attachment of UCAS points for students who achieve an A in this exam. Students study a combination of skills and language points to enable them to thrive in their subject classes and develop their language skills prior to university entry. A small number of students study IELTS if this is more applicable to their learner needs due to limited language ability or limited time on their chosen Programme of Study.

WE AIM TO DEVELOP

Improve understanding of English grammar and the English language

PROGRESSION PATHWAYS

English classes are applicable to students in any faculty within the school and any Programme of Study. English classes will enable the students to succeed in their current course and demonstrate to potential universities their language ability. This is a necessary element of every university offer for all international students.



COURSE CONTENT

Students will follow a syllabus mapped to the exam they are preparing for. The content has been created for this course to develop academic and essential lifelong skills, including critical thinking and problem-solving. Topics covered will allow opportunities for contextualised learning. The range of topics explored throughout the programme include: art, media and advertising, business and money, communication and personality, crime and punishment, education and reading, environment, family and children, health, food and diet, government, housing, linguistics, leisure and tourism, society, space exploration, sport and exercise, technology, transport, work.

ASSESSMENTS

- **Component 1:** Reading and Use of English 1 hour 30 minutes (Eight Parts)
 - ▶ Assessing students' knowledge of idioms, collocations, fixed phrases and grammar.
 - ▶ Assessing students' ability to comprehend main ideas and details of the content of the text, the writers' opinions and attitudes and text organization features.
- **Component 2:** Writing 1 hour 30 minutes (Two Parts)
 - ▶ Assessing students' ability to discuss two points and form opinion on which is most important.
 - ▶ Assessing students' ability to compare, give advice, give opinions, justify and persuade through various forms of writing genre.
- **Component 3:** Listening 40 minutes (Four Parts)
 - ▶ Assessing students' ability to understand detail, gist, opinion, speaker feeling attitude, function, Purpose, agreement between speakers and course of action.
- **Component 4:** Speaking 15 minutes (Four Parts)
 - ▶ Assessing students' ability have a conversation on general and personal topics.
 - ▶ Assessing students' ability to organize a larger unit of discourse, comparing, describe, express opinions and speculate.
 - ▶ Assessing students' ability to interact, express and justify opinions, agree and/or disagree, evaluate and reach a decision through negotiation.
 - ▶ Assessing students' ability to express and justify opinions on extended questions.

TEXTBOOKS/ REVISION GUIDES

Ready for CAE
Gold Advanced
Cambridge Advanced English Examination Papers 1, 2 & 3

For more information, please view our Guildhouse School website www.guildhouseschool.com



Follow us:





SUBJECT OVERVIEW

All students within the school who have not yet achieved an IELTS or equivalent of 7.5 overall and no less than 7.0 in each skill need to take EAP classes at Guildhouse School. The students are streamed in terms of language ability but are mixed in their classes in terms of Programmes of Study. Students with a higher level of English on arrival at Guildhouse School are streamed into CAE classes. Those who need extra help securing the minimum language requirements are streamed into IELTS classes.

For university study, our students generally require a minimum IELTS grade of around 6.5 overall and no less than 6 in each of the individually assessed skills (reading, writing, speaking and listening), although the requirements can vary depending on the institution and course. Studying in an IELTS class provides the opportunity to develop the necessary language and skills that will enable them to cope with university level study.

WE AIM TO DEVELOP

Increase the range of vocabulary students can use.

HE PATHWAYS



English classes are applicable to students in any faculty within the school and any Programme of Study. English classes will enable the students to succeed in their current course and demonstrate to potential universities their language ability. This is a necessary element of every university offer for all international students.

TEXTBOOKS/ REVISION GUIDES



Foundation IELTS Masterclass
Ready For IELTS

COURSE CONTENT



Students will follow a syllabus mapped to the exam they are preparing for. The content has been created for this course to develop academic and essential lifelong skills, including critical thinking and problem-solving. Topics covered will allow opportunities for contextualised learning. The range of topics explored throughout the programme include:

- Education and learning
- Health and Medicine
- Society and Family
- Population and the Environment
- Culture and Entertainment
- Careers and Success
- Nature and Biology
- Producers and Consumers
- Media and Travel
- Science and Processes

ASSESSMENTS



Weekly progress tests which introduce and build on students' exam skills.
A full IELTS mock exam.

Component 1: Listening 30 minutes (Four Sections)

- ▶ Assessing students' ability to deal with situations set in everyday social contexts
- ▶ Assessing students' ability to understand specific and main points of the listening text
- ▶ Assessing students' ability to recognize the relationships between facts in the listening text

Component 2: Reading 60 minutes (Three Sections)

- ▶ Assessing students' ability to deal with various text types, such as books, journals magazines and newspapers
- ▶ Assessing students' ability to understand specific and main points of the reading passage
- ▶ Assessing students' ability to recognize particular points of information conveyed in the text and thus it using it with more factual texts
- ▶ Assessing students' ability to recognize opinions or ideas in discursive or argumentative texts

Component 3: Writing 60 minutes (Two Sections)

- ▶ Assessing students' ability to describe visual information (graph/table/chart/diagram) in their own words
- ▶ Assessing students' ability to respond to a point of view or argument or problem

Component 4: Speaking 11-14 minutes (Three Sections)

- ▶ Assessing students' ability to communicate opinions and information on everyday topics and common experiences or situations by answering a range of questions
- ▶ Assessing students' ability to speak at length on a given topic, using appropriate language and organizing ideas coherently

For more information, please view our Guildhouse School website www.guildhouseschool.com



Follow us:

